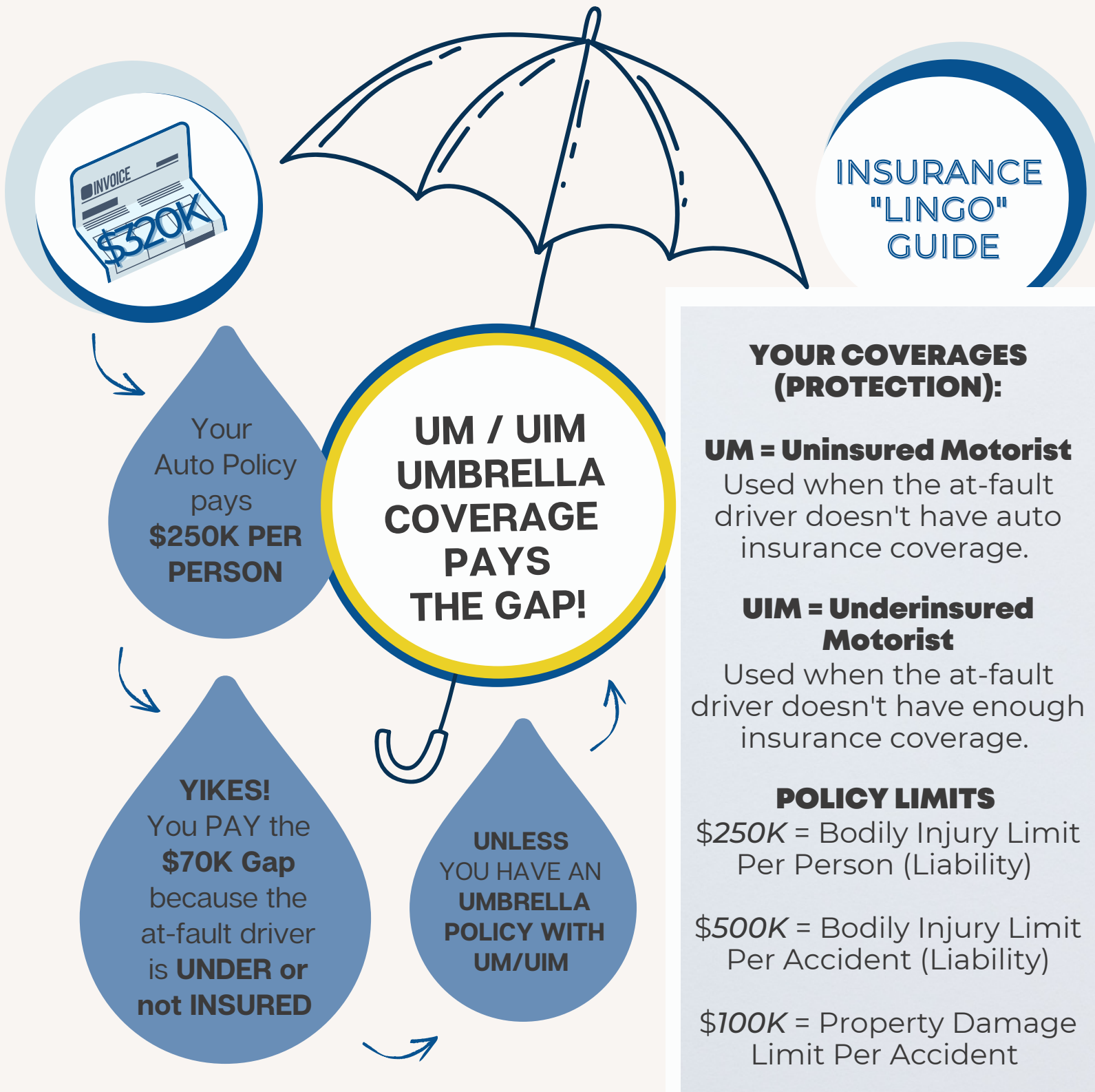


UMBRELLA UM/UIM COVERAGE TO "KEEP YOU DRY" IN A RAINSTORM

What Happens: you have \$320K in bills from a
NON FAULT accident with \$250K/\$500K/\$100K Policy Limits?



ERIE'S UMBRELLA CAN COVER YOUR GAP

Contact Your Account Manager at 703.527.8780 or info@figva.com